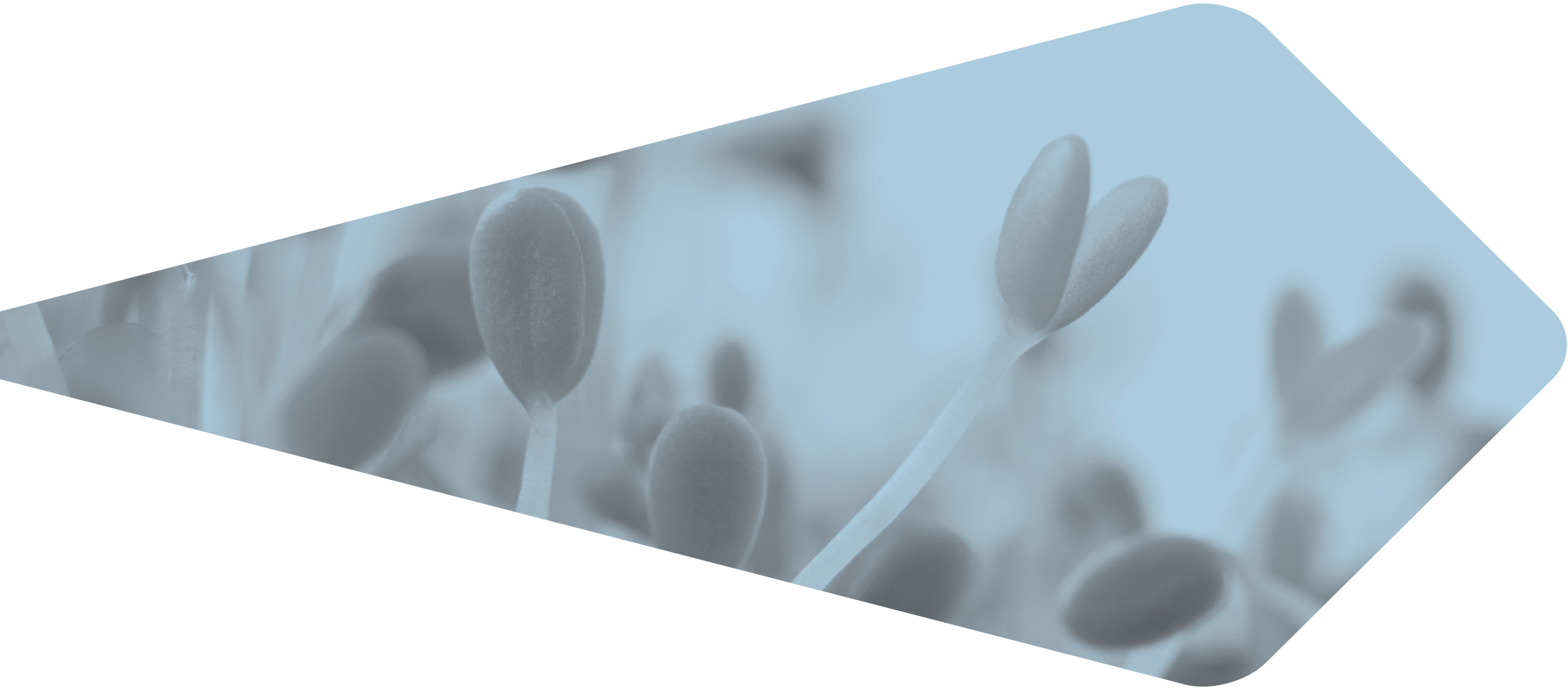




**ROYAL FREE LONDON**  
**PRIVATE PATIENTS**  
investing in the NHS



T: +44 (0)20 7317 7751  
E: [rf.privateenquiries@nhs.net](mailto:rf.privateenquiries@nhs.net)  
W: [www.royalfreepivatepatients.com](http://www.royalfreepivatepatients.com)  
A: Royal Free London, Private Patients Unit,  
Pond Street, London NW3 2QG

investing in the **NHS**

# Private Paediatrics Clinic

Positively **welcoming**   Actively **respectful**   Clearly **communicating**   Visibly **reassuring**

The Royal Free London NHS Foundation Trust is one of the largest acute teaching trusts in London, and one of only a few across the country rated excellent for the quality of its services by the Care Quality Commission – for the third year running.

The Royal Free London is a founding member of UCL Partners - an academic health science partnership - a collaboration between five of Britain's world-renowned medical research centres and hospitals. Its focus is on preventing and treating major diseases that affect populations in London, the UK and worldwide. As well as providing all branches of surgery and medicine, the Royal Free London is renowned for its highly specialised services; plastic surgery, ENT and paediatric gastroenterology. So children coming to the Royal Free benefit from the expertise of a number of different specialists.

### WHY CHOOSE THE ROYAL FREE LONDON PRIVATE PATIENTS CHILDREN'S SERVICES?

The Royal Free London is currently the only trust in North London providing an on-site NHS paediatric consultant delivered service 24 hours a day, 365 days a year. We think that having a paediatric consultant resident on-site at all times makes for a safer and better service both on the NHS and privately.

#### Designed with children in mind

Hospitals can be daunting places for children and their families. Our newly-designed and refurbished children's clinic on the first floor provides a friendly environment to help put children at ease when they come to hospital.

The clinic area has an impressive life-size animal and natural world theme, turning a visit to hospital into a fun event, reducing anxiety and keeping children occupied.

Whilst waiting to be seen, the children are given their own take home activity pack to keep them occupied and entertained.

#### Royal Free London Private Paediatric Clinic

A dedicated Private General Paediatric Outpatient Clinic is available every weekday from Monday to Friday from 5:30pm to 8:00pm. We accept GP referrals and self referrals. Please contact our dedicated private patients referrals team via any of the methods listed below to book your child's consultation today.

Our consultants are able to see children with common childhood illnesses, e.g:

- Troublesome cough
- Diarrhea and vomiting
- Viral illnesses
- Wheezing /asthma
- Constipation
- Feeding difficulties
- Unsettled baby
- Allergies
- Gastroesophageal reflux

#### PAYMENT

We are recognised by all major UK health insurers. Please ensure that you have spoken to your insurer and obtained authorisation for your child's treatment prior to the consultation or treatment. Please bring the authorisation reference with you.

If you do not have insurance for your child, or you cannot obtain cover for this treatment, you will be asked for payment for your child's consultation or treatment before the visit. Call us to acquire guidance on how much your child's treatment may cost.

### SPECIALIST CLINICS

#### Allergy

The team includes a paediatric specialist allergy nurse and a paediatric dietician as well as paediatric consultants who specialise in allergy and dermatology.

- Allergy affecting the chest, including asthma
- Allergy affecting the nose
- Allergy affecting the skin eg eczema & urticaria
- Anaphylaxis
- Food allergy

The service offers skin prick testing, dietetic advice, lung function tests, training on how to use asthma pumps and Epipens as well as food challenges.

#### Asthma

We have specialist asthma clinics for children with asthma. The clinic has state of the art lung function equipment such as spirometry.

#### Cardiology

We have a consultant paediatrician who is experienced in performing and interpreting echocardiograms.

#### Ear, nose and throat

We offer a specialist private Paediatric ENT outpatient clinic as well as private operating lists for procedures such as adenoidectomy, grommets & tonsillectomy. The following services are also available; audiology, sleep apnoea clinic, sleep studies and neonatal tongue tie service.

#### Gastroenterology

This is a service for children with gastrointestinal disorders.

The service includes:

- Paediatric inflammatory bowel disease (IBD) service
- BD adolescent and young adult clinic
- General Paediatric gastroenterology and motility clinic

Breath tests, food challenges, combined PH/impedance studies and other specialist ambulatory gastrointestinal investigations are performed including the latest wireless capsule endoscopy.

#### Ophthalmology

Our Paediatric Ophthalmology Consultant runs a specialist private outpatient clinic that deals with conditions such as watery eye, cysts on Eyelids, squint, amblyopia (lazy eye) and cataract.

#### Plastic surgery

Our plastic surgery consultants undertake surgery across a wide spectrum.

### WHAT TO EXPECT WHEN YOU COME TO THE CLINIC

#### Before you come:

The referrals team will ask you questions about your child to enable registration with the clinic and to provide some background for the consultant.

You will be asked to provide information in relation to funding of your child's treatment, whether through insurance authorisation details or request for payment before any tests are carried out. The referrals team will be able to provide a rough estimate of the anticipated costs before you commit.

The Private Patients team will contact you if there are any further follow up appointments required for your child. A copy of the consultation letter will be sent to you.

#### WE ARE UNABLE TO HELP WITH...

- Serious medical emergencies posing an immediate threat to a child's health or life
- Head injuries
- Accidental ingestion
- Severe allergic reactions
- Severe blood loss
- Suspected fractures/breaks
- Lacerations
- Burns

In these instances we would advise parents to visit their local accident and emergency department or in an emergency dial 999.

The clinic is available Mondays to Fridays from 5:30pm to 8:00pm